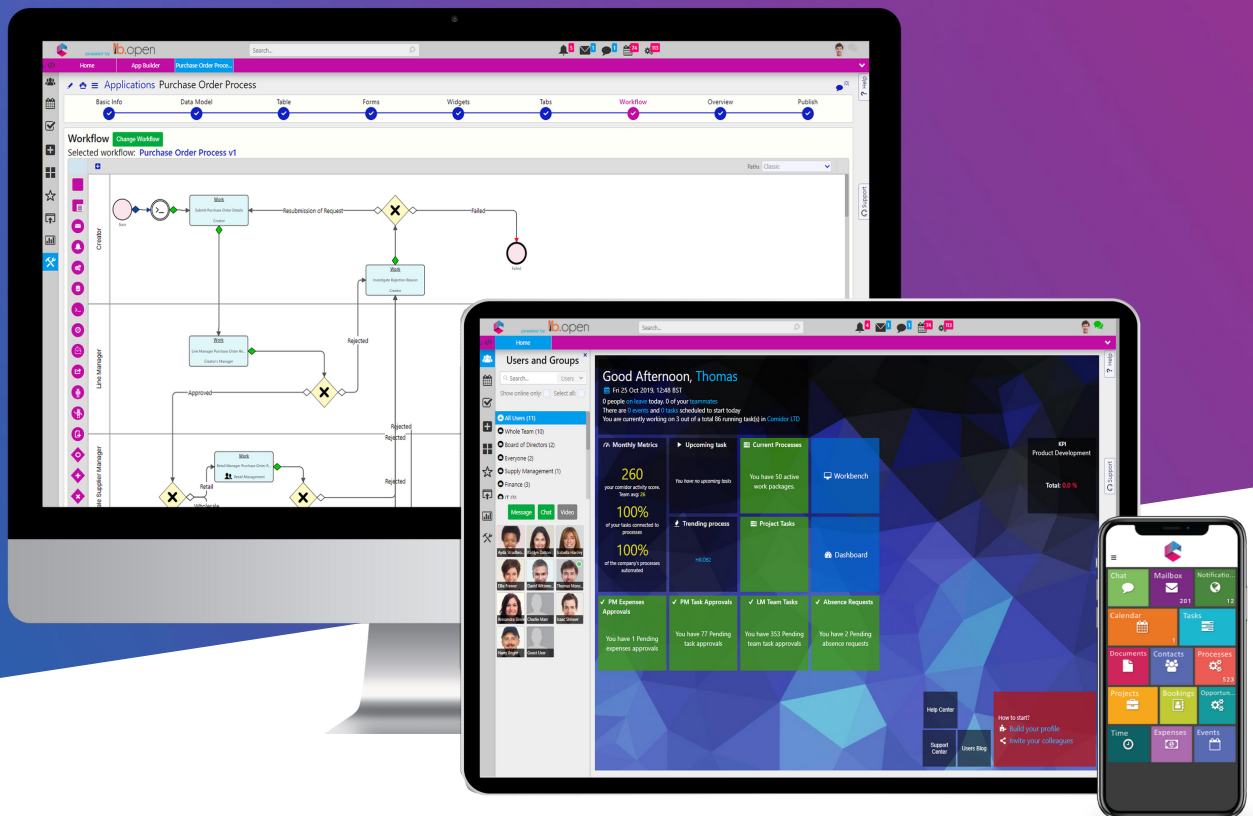




comidor



COMIDOR v5.8

PRODUCT RELEASE NOTES

NOVEMBER 2019

TABLE OF CONTENTS

New in this Release

| | |
|---|---|
| 1.General | |
| a.UX Improvements in all Comidor units..... | 1 |
| b.Sorting/ Grouping processes..... | 1 |
| c.Import/Export forms for surveys | 2 |
| 2.App Builder | |
| a.Copy, import/export apps..... | 2 |
| b.Widgets..... | 2 |
| c.Tabs..... | 3 |
| 3.Workflows | |
| a. RPA..... | 3 |
| b. File reader component..... | 4 |
| c. Export data component..... | 4 |
| d. Document Creator component..... | 4 |
| e. Form Conditional field appearance..... | 5 |
| f. Annotations..... | 5 |

Improvements in this Release

| | |
|----------------------------------|---|
| 1. General Improvements..... | 6 |
| 2. App Builder Improvements..... | 6 |
| 3. Workflow Improvements..... | 6 |

NEW IN THIS RELEASE

GENERAL UX IMPROVEMENTS

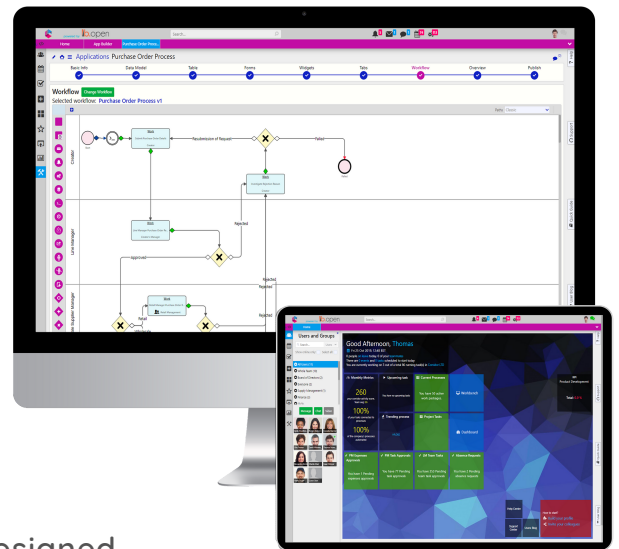
We are excited to share with you our new and redesigned Comidor v5.8. We have drastically improved the user experience (U.X.) focusing on the subtle details that made Comidor a whole new experience. More specifically, bugs have been fixed, we have added warnings that prevent errors and we have enhanced the usability with:

- Tooltips in all Comidor Units that contain brief helper text which guides users while they use actionable icons.
- Reset on every search bar. Now users can make searches with any number of filters without the fields losing their default values.

SORTING/GROUPING PROCESSES

Comidor v.5.8 allows you to arrange and order your processes to make them easier to understand, analyze and visualize:

- Process Dashboard: sort processes based on their main process.
- Workbench: group processes based on Accounts.



IMPORT/EXPORT FORMS FOR SURVEYS

Qualitative research can help businesses understand not only what their customers think about their products/services but also the reasons behind their thoughts. Comidor enables you to:

- Create, export, or import other forms in order to create and conduct your own surveys quickly and cost effectively.

APP BUILDER

COPY,IMPORT/EXPORT APPS

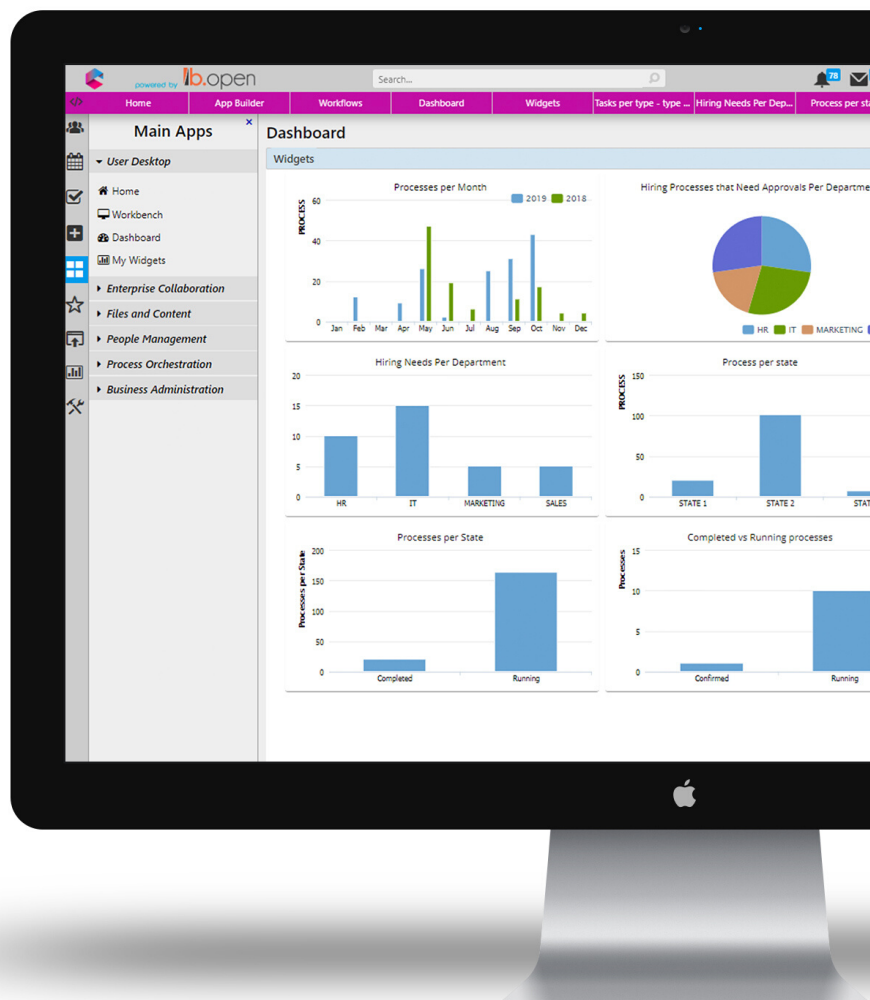
Comidor offers the ability to non-developer users to easily create their own apps using the App Builder. With v5.8:

- Another department of your company needs a very similar app? Simply copy the app rather than start from scratch.
- With the new import/export features you can transfer applications between accounts without coding.

WIDGETS

Comidor Widgets are the ideal choice for data visualization. Get real-time data based on parameters you define.

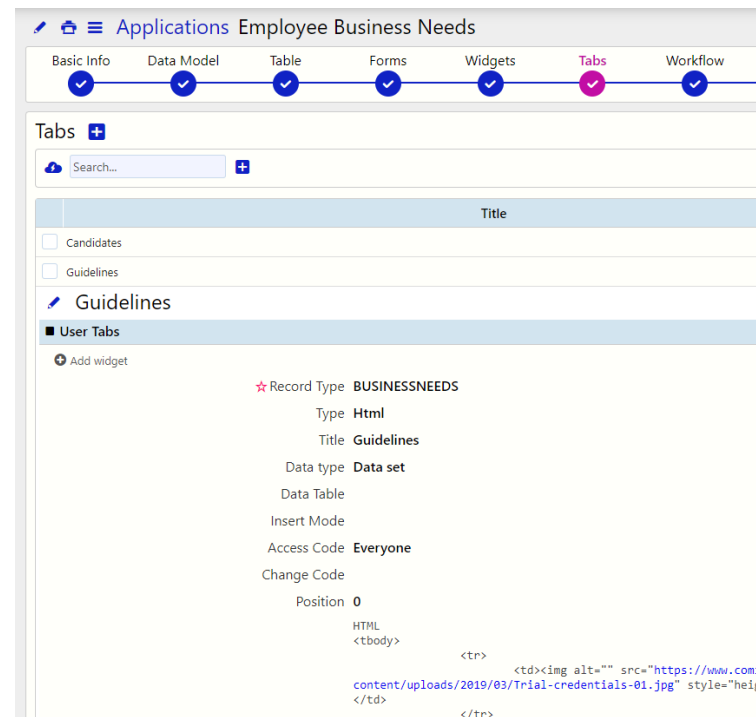
- Create your own personalized dashboard easily following a few easy steps.
- Combine multiple views of data to create rich dashboards.



TABS

Get the most out of the App Builder with this new 6th step. Use tabs to have complete control over the accessibility of your application.

- The tabs can appear inside records (as a tab at the left part of the record) or at the summary table of the application.
- A tab can be a table from any Comidor entity, HTML or a widget.



WORKFLOWS

ROBOTIC PROCESS AUTOMATION (RPA)

Digital Automation never looked so simple. RPA improves the operational excellence within your organization by increasing employee performance, efficiency and agility. This new Comidor feature allows you to automate repetitive tasks. With the new RPA Caller and RPA receiver workflow components you are able to retrieve or exchange data with other systems. RPA can be integrated in:

- Process initiation
- Report generation
- Files upload in Comidor Document Management System (DMS)



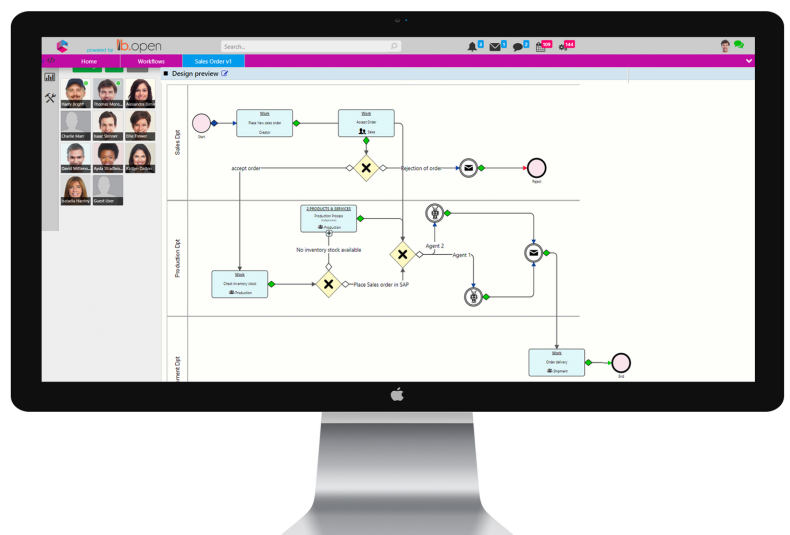
RPA caller



RPA receiver

With Comidor RPA you can:

- Automate repetitive tasks
- Increase productivity of employees as they can perform more value added tasks rather than focusing on repetitive business procedure
- Speed up time-consuming processes



FILE READER COMPONENT

Comidor's file reader workflow component enables you to read files from a specific path and save them to binary fields in Workflow or import data from a file into Comidor Units.

- Select if you want to read a file that exists in a specific path or import a file from a document which is already uploaded to Comidor.
- Import data from a file from a specific path or from a binary field that is used within the workflow in a previous stage.
- Import data from a .csv file and fuel Comidor's entities (such as Processes, Accounts etc.) with data.
- Indicate your preferred Date, Time and Number formats for your data.

EXPORT DATA COMPONENT

This workflow component enables you to export data that is stored in Comidor and make your own reports. A .csv file is created which contains fields with information that you want to extract. You can save these files to a specific path or to a Binary field which is created inside Comidor.

- Filter your exported data based on specific values or characteristics
- Export data from a specific export path or a binary field which exists in Comidor
- Select data which exists in Comidor
- Create custom reports and store them in .csv format

DOCUMENT CREATOR COMPONENT

Even simple process such as invoicing can be time-consuming and prone to errors. Comidor v5.8 automates document creation through workflows to keep things simple and streamlined. With the document creator component you can :

- Create invoices, reports or other types of documents by combining a file template format and fields of the workflow.
- Set a Template File for your document; in a Form from your desktop, upload it in a step of the workflow in a Binary field, or give the Template Name of a file stored in the DMS.

FORM CONDITIONAL FIELD APPEARANCE

The field rules functionality enables you to hide or show fields inside forms when certain conditions are met.

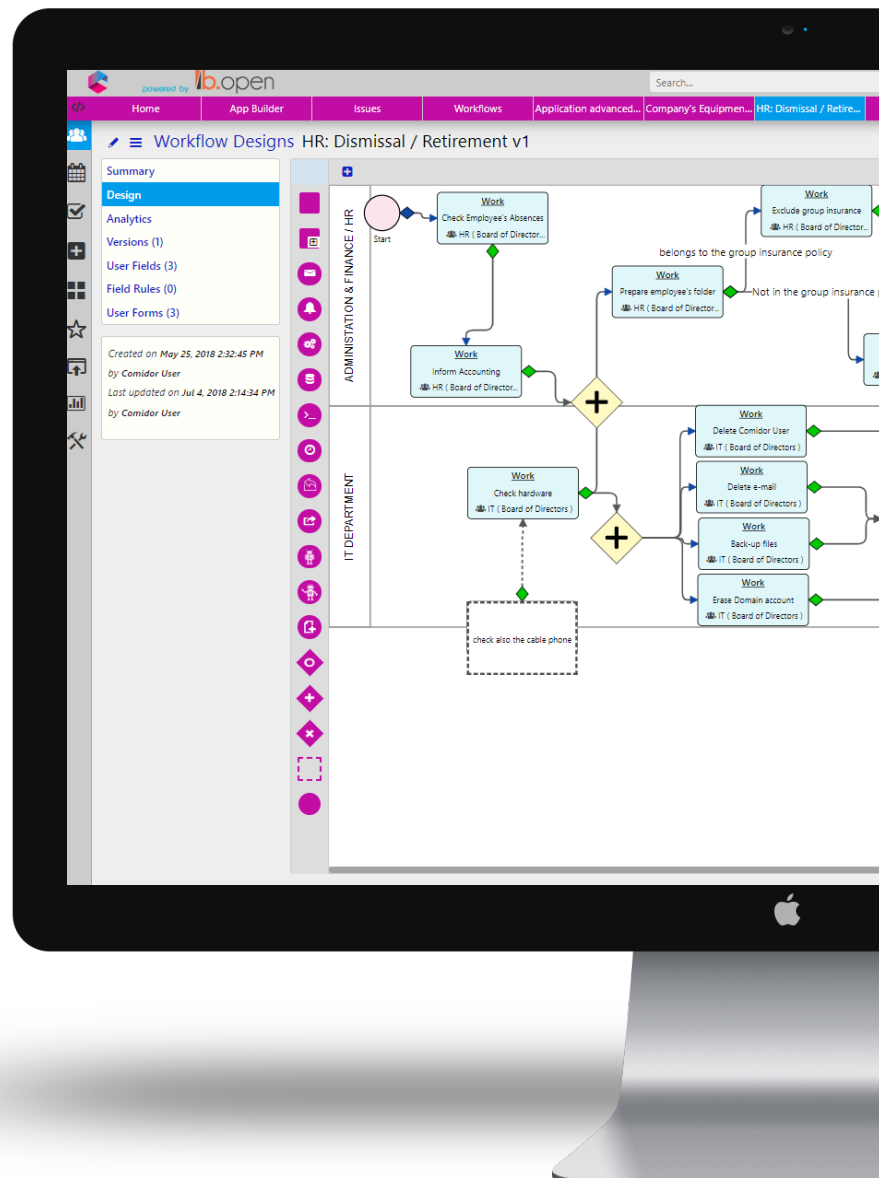
- Create custom condition scenarios for fields and select in which scenario the fields are going to be shown or hidden.
- Create both simple and advanced conditions to cover multiple scenarios
- Skip workflow steps like tasks and forms by making your adjustments to one simple form.
- Hide sensitive information which should be displayed only in certain user, roles or groups in a workflow.

ANNOTATIONS

Ensure your workflows are clear and understandable for all colleagues by adding notes explaining the various components and tasks. If a process is only managed by and visible to you, annotations provide an invaluable reference when processes are reviewed at future dates.

With Annotations you can:

- Explain the purpose of tasks in more detail or give them a more helpful description.
- Connect your comments with the component(s) as required.



IMPROVEMENTS IN THIS RELEASE

GENERAL

- Select an activity instantly while you create a task, in order to monitor it efficiently.
- You can now enrich the body of a wiki by uploading images from your desktop directly inside wikis.
- Find your colleagues more easily in the improved chat search functionality. Use “show online only” option to find only colleagues that are available.
- Upload multiple files from your desktop, or from Comidor DMS in the dedicated Attachments tab of Contracts and it will be automatically linked with a Contract.

APP BUILDER

- Set the preferred alignment of the columns in the summary table.
- Filter entries in the summary table of your Application based on state
- Customize the data of your application and set assignees, administrator and supervisor.

WORKFLOWS

- Make cells mandatory in Excel components.
- Get improved reporting by selecting date range and adding cost in workflow analytics
- Ability to print and export the graphs from workflow analytics in various formatting (JPG, PNG, PDF, SVG)

FOR MORE INFORMATION PLEASE CONTACT:

Customer Success Team

 +44 (0)20 3397 8057

 customer.success@comidor.com

 www.comidor.com

Connect with us!



[/comidor-ltd](#)



[/Comidor](#)



[@ComidorCloud](#)



[Comidor Cloud](#)



[/Comidor](#)

